

EMES Activity Report 2021

BUILDING KNOWLEDGE TOGETHER



EMES network

© EMES International Research Network asbl

c/o University of Liege
Place des Orateurs,1
4000 Liege
Belgium

Tel.: +32 (0)4 366 31 39
Fax.: +32 (0)4 366 28 51

Design: CulBuks

EMES Activity Report 2021

BUILDING KNOWLEDGE TOGETHER



EMES network

Table of contents

5 Glossary	6 Introduction
8 EMES in figures	10 What is EMES?
12 Timeline 1996-2021	16 Events
26 Research Initiatives	32 Publications
38 Training & Education	42 EMES Membership
50 Communication & Engagement	54 Future gatherings...



EMES network

Glossary

AICCON

Research Centre on Cooperation and Non Profit Organizations (IT)

CSS

Centre for Co-operative Studies (IE)

CES-BE

Center for Social Economy (BE)

CES-PT

Centre for Social Studies (PT)

CIRTES

Centre Interdisciplinaire de Recherche Travail, État et Société (BE)

CNAM

Conservatoire national des arts et métiers (FR)

CSE

Centre for Social Entrepreneurship (DK)

ECR

Early-career Researcher

EJEB

EMES Junior Experts' Blog

EURICSE

European Research Institute on Cooperative and Social Enterprises (IT)

GESES

Expert Group on Social Entrepreneurship of the European Commission

GESES

Group of Social and Economic Studies of the Third Sector (ES)

FSI

FairShares Institute for Cooperative Social Entrepreneurship

IAP-SOCENT

Interuniversity Attraction Pole - Building interdisciplinary and integrated knowledge on social entrepreneurship and social enterprise (project)

ICSEM

International Comparative Social Enterprise Project (project)

ITC

Intensivennes Target Countries

LEST

Laboratoire d'Economie et de Sociologie du Travail, Univ. of Aix-Marseille (FR)

RUC

Roskilde University

SDGs

Sustainable Development Goals

SE

Social enterprise, social economy, solidarity economy

SESAM

Norwegian centre for social entrepreneurship and social innovation (NO)

SHU

Sheffield Hallam University (UK)

SSE

Social and solidarity economy

UNTFSSSE

UN Inter-Agency Task Force on Social and Solidarity Economy

UCL

Université catholique de Louvain (BE)

ULg

Université de Liège (BE)

WISEs

Work integration social enterprise

Introduction



Dear Member, dear Reader,

It is a pleasure for us to present to you the Activity Report of our Network covering 2021.

As you know, 2021 was affected by the Covid-19 pandemic that led to the cancellation of some events and a reconfiguration of many processes at EMES. Still, the EMES community thrived. We lived through this crisis not only as an organization but, most importantly, as an interconnected and mutually supportive community. In this context, we are pleased to share with you the most relevant milestones that happened during the year: the successful closing of EMPOWER-SE COST Action, an excellent 8th EMES International Conference in Teruel (Spain) and, thanks to the support of EMPOWER-SE COST Action, the publication of two new Routledge books available in Open Access.

The opportunity to meet again at the 8th EMES International Research Conference in Teruel (Spain) to share our work and discuss among researchers, social entrepreneurs, and policymakers was truly inspiring. This gathering was also necessary to bring back enthusiasm and re-imagine SE principles and values.

We have successfully closed 2021 thanks to our members who supported EMES through different stages. We were able to experiment with a more digitally based environment, while still organizing quality events and gatherings.

As a community of researchers working in the SE field (social enterprise, social entrepreneurship, social economy, solidarity economy and social innovation), we think that now is the right time for learning some lessons about this pandemic in the sense of contributing to overcoming challenges that our societies are facing. We look forward to building a body of knowledge on SE that can also help with renewing the SE-based action across the world.

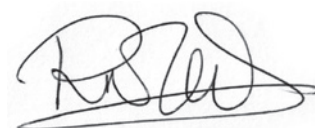
Hopefully, we will be gathering again in June 2022 in Seville (Spain) for 8th International Training School while we continue to prepare 9th EMES International Research Conference on Social Enterprise in 2023.

We welcome you at all our events, where the aim is to continue learning from each other and support people which constitute the most important element of EMES.

Enjoy the reading, and we look forward to seeing you again soon!



Taco Brandsen
President



Rocío Nogales
Managing Director

EMES Network in figures



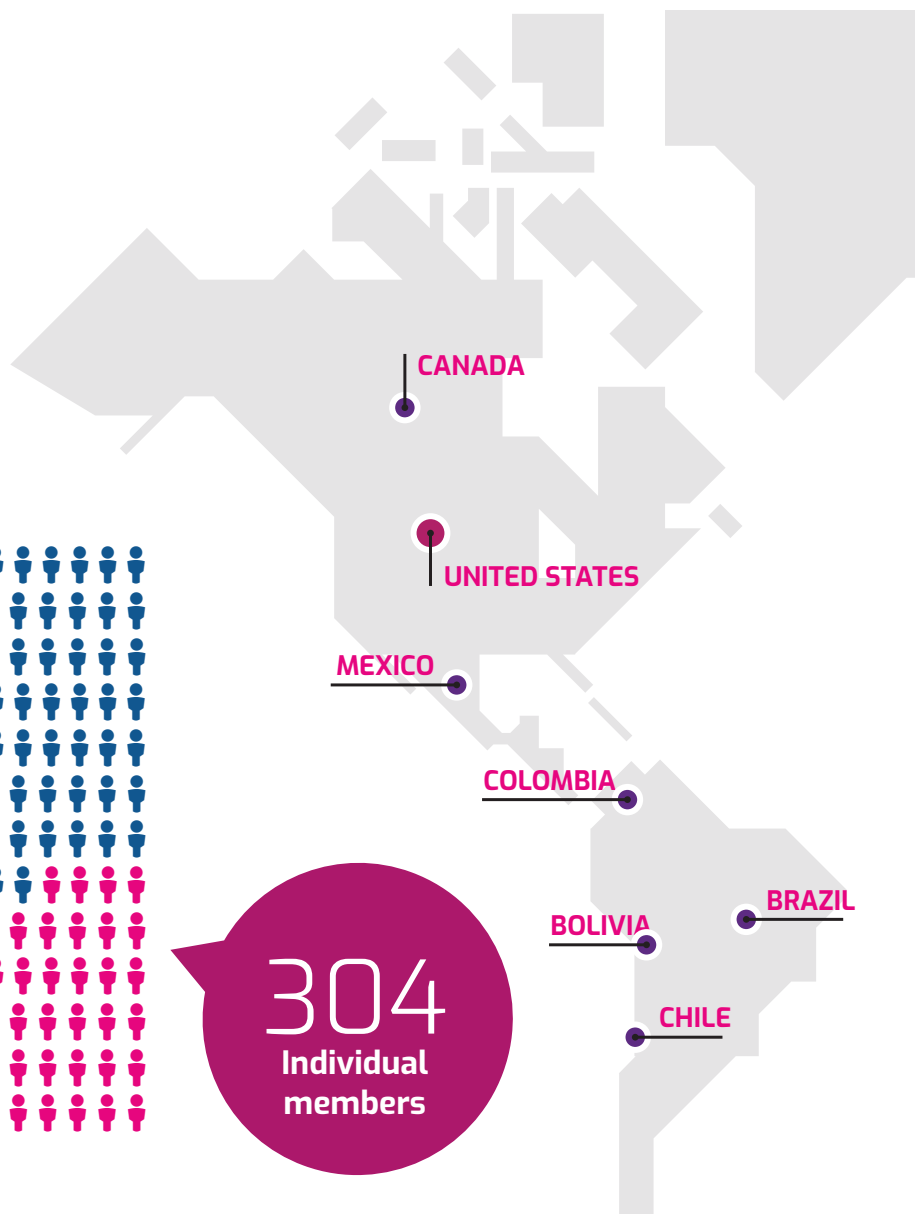
184

individual researchers



120

graduate students



25

Years

Since 1996, when an international group of scholars launched the first research network devoted to social enterprise.

15

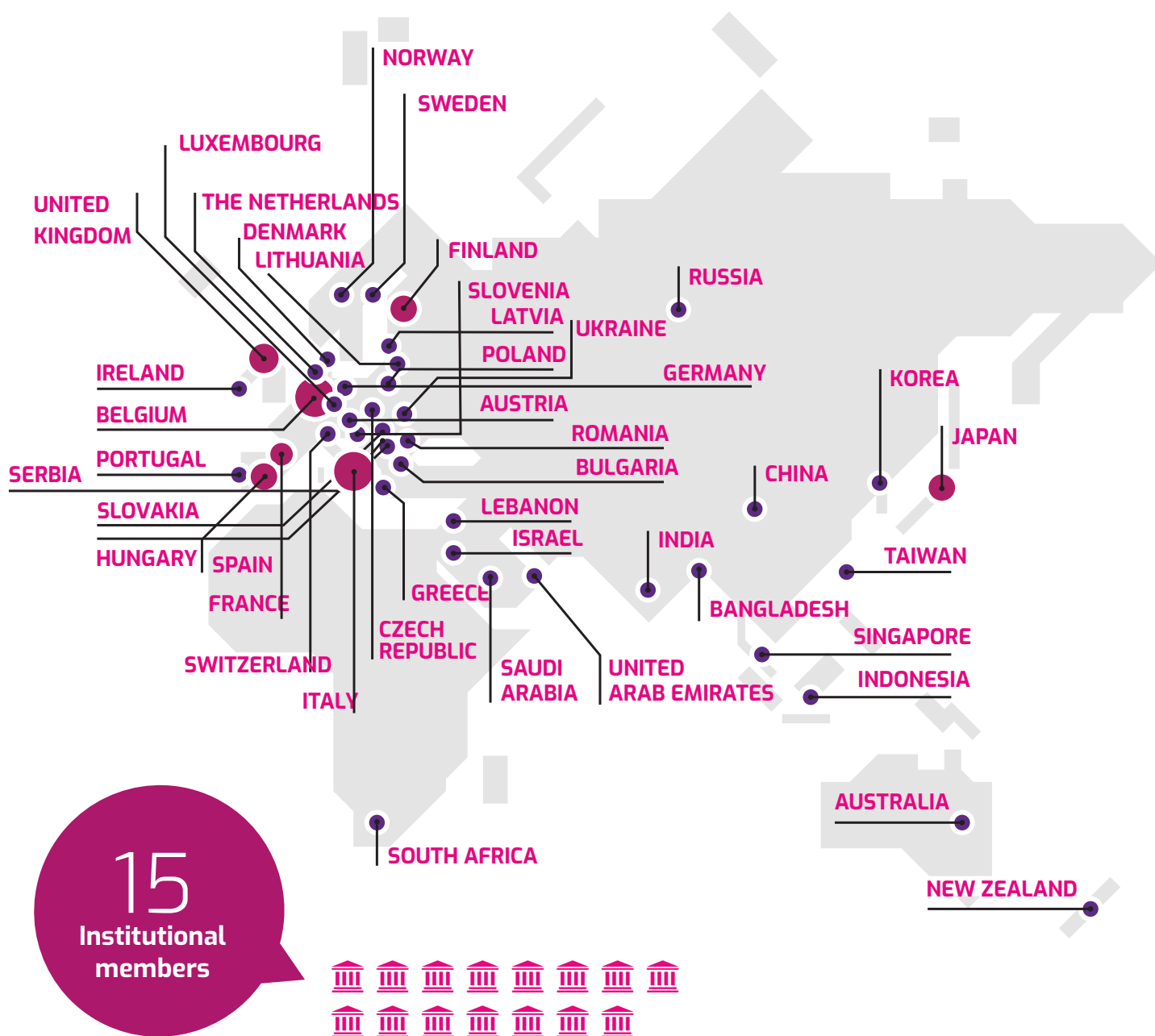
Institutional members

The institutional pillars of EMES, leading research centers acting together to carry out influential collaborative research.

304

Individual members

We believe in the power of connecting individual researchers around the world.



18
Projects

International comparative projects.

2440
Conference Participants

Number of participants in EMES conferences.

254
Conference Papers

Number of EMES Conferences Selected Papers available to download.

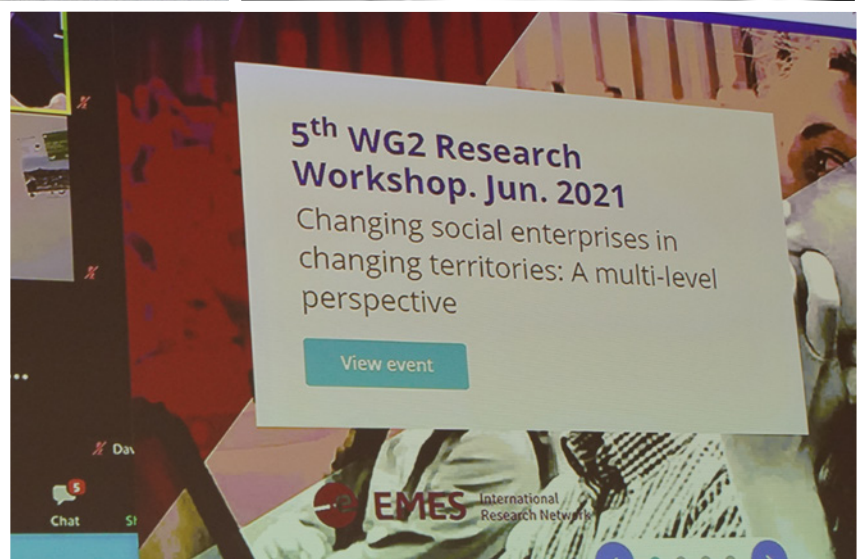
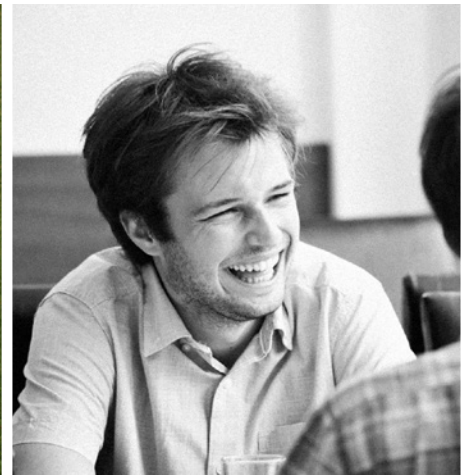
What is EMES?

EMES is a international research network of established university research centres and individual researchers whose goal is to build up an international corpus of theoretical and empirical knowledge, pluralistic in disciplines and methodologies, around the “SE” concepts: social enterprise, social entrepreneurship, social economy, solidarity economy and social innovation.

EMES has existed since 1996, first with a European focus; then, in 2013, its membership opened to researchers and PhD students from all around the world. EMES brings together over 304 individual members, including more than 100 PhD candidates, and 15 institutional members from over 50 countries. EMES has conducted over 17 international comparative research projects. Since 2001, it has organised on a bi-annual basis eight international research conferences and seven PhD training schools in alternative years from the conference since 2008.

EMES regularly publishes the results of its research projects in various formats, including the EMES Working Papers series and the EMES Selected Conference Papers series. In collaboration with the EMES PhD Students’

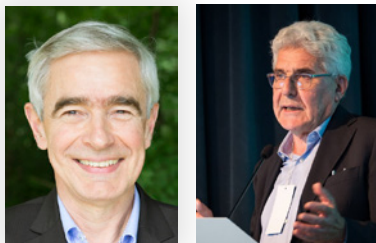
Network, EMES maintains the EMES Junior Experts’ Blog (EJEB) as a way to encourage PhD students to publish texts about their dissertation in connection with current issues in society. In addition, EMES collaborates with international organisations and governments at all levels to advance the understanding of social enterprise and support evidence based policy-making in this field around the world. In this context, EMES is an Observer Members of the United Nations Task Force for the Social and Solidarity Economy (UNTFSSSE) and a member of the European Commission’s Experts’ Group on Social Entrepreneurship (GECES). The timeline shows the main milestones that have been achieved until 2021.



Timeline of EMES 1996-2021

1996

THE STORY OF EMES BEGAN with the project entitled “L’Emergence des Entreprises Sociales” (acronym from the French title: EMES) under the leadership of **Jacques Defourny** (ULg, Belgium).



2001

THE FIRST EMES COLLECTIVE BOOK “The Emergence of Social Enterprise” is published under the coordination of **Carlo Borzaga** (EURICSE, Italy) and **Jacques Defourny**.

2001-2004

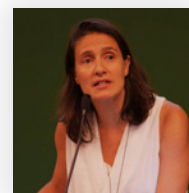
The PERSE PROJECT results in a collective book of EMES, entitled “Social Enterprise at the crossroads of market, public policies and civil society”. **Marthe Nyssens** (CIRTES, UCL, Belgium) coordinated this 2nd international comparative research project.

**PHASE 2: Formalization
The EMES European Research Network**

**PHASE 1: Prehistory EMES as
a European thematic network**

2002

FORMAL ESTABLISHMENT OF EMES AS A NON-PROFIT ORGANIZATION under Belgian law in April 20, 2002 under the presidency of **Jacques Defourny**. The “EMES European Network- Réseau Européen EMES asbl” was located at the Center for Social Economy at the University of Liege.



2004

ROCÍO NOGALES became a coordination assistant to increase the capacity of the Network.

2005-2008

Groundbreaking initiatives took place in this phase such as the joint **EMES-ISTR European conferences** in Paris (2005) and Barcelona (2008). The first members' seminars were held in Barcelona in 2006.

2008-2009

Organization of the **1ST EMES PHD SUMMER SCHOOL** in Corte (Corsica, France) and the **1ST EMES INTERNATIONAL RESEARCH CONFERENCE ON SOCIAL ENTERPRISE** in Trento (Italy).

2008

Rocío Nogales, Coordination Unit director, moved to Madrid which resulted in the creation of an **EMES ANTENNA IN SPAIN**. Also, **Sabine Spada** and **Sophie Adam** worked with Rocío to support the Coordination Unit.

PHASE 3: Consolidation Research beyond projects

2009

An important project involving several EMES members was the **MAPPING OF SOCIAL ENTERPRISE** commissioned by the Bratislava Regional Centre of the UNDP.

The final publication stemming from this project was "Social Enterprise: A New Model for Poverty Reduction and Employment Generation" by Borzaga, Galera and Nogales.

2010-2014

VARIOUS COLLABORATIONS AND PARTNERSHIPS

were developed in Latin America with the sister network RILESS; in Eastern Asia with joint conferences in Taiwan (2010) and South Korea (2014); as well as in Eastern Europe, under the leadership of EURICSE.

2010

Lars Hulgård (CSE-RUC, Denmark) was elected as the second president of EMES and hosted the **2ND EMES PHD SUMMER SCHOOL** and the **2ND EMES INTERNATIONAL CONFERENCE** in Roskilde.



2012

Jean-Louis Laville (CNAM, France) spearheads joint events with the **POLANYI INSTITUTE** in the form of a bi-annual seminar, the first one was held in Paris in 2012 and counted with the participation of Kari Polanyi-Lewitt and Margie Mendell (Polanyi Institute, Montreal), Nancy Fraser (US) and José Luis Coraggio (Argentina).

PHASE 4: Globalization Empowering peripheral researchers and building a global community



2013

The **4TH EMES CONFERENCE** took place in Liege.

The **ICSEM PROJECT** was launched under the scientific leadership of **Jacques Defourny** and **Marthe Nyssens**, gathering more than 200 research partners from 30 countries.

2015

EMES opened up to new members from all regions and changed its name FROM "EUROPEAN" TO "INTERNATIONAL".

2016-2019

The Coordination Unit participates in the coordination of the pilot update on the **MAPPING STUDY** in 2016 (seven countries) and of the full update in 2018-19, involving 31 countries.

2016

Marthe Nyssens became the third president of EMES.



2017-2021

Regarding projects, the **ICSEM PROJECT** gave birth to books "Social Enterprise in Western Europe" and "Social Enterprise in Central and Eastern Europe" now available in Open Access.

The **EMPOWER-SE COST ACTION** runs from 2017 -2021, gathering over 400 researchers and 150 stakeholders from 44 countries with **Sílvia Ferreira** (CES, Coimbra, Portugal) as the new Action Chair.

PHASE 5: Stabilisation EMES as a global social enterprise



2021

The first hybrid **8TH EMES INTERNATIONAL RESEARCH CONFERENCE** was organized in Teruel (Spain) in October 2021. It gathered 150 researchers and stakeholders face-to-face and over 250 researchers online.

Tamara Bilbija joins the Coordination Unit team, joining **Sophie Adam** and **Rocío Nogales**, and bringing the team work to a new level.

During the 2021 annual General Assembly, held during the 8th EMES Conference in Teruel, **Taco Brandsen** took over the presidency of the EMES Board of Directors.

AFFINITY GROUPS are approved as a way to get members organized around specific research themes and interests. The first two ones are "Culture and the Arts" and "Migration Issues".

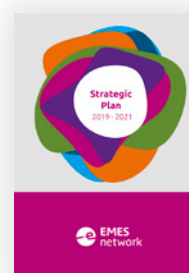


2017

Marthe led the organization of the **6TH EMES INTERNATIONAL CONFERENCE** and became the Chair of the first **COST ACTION** won by EMES, "Empowering the next generation of social enterprise scholars" (EMPOWER-SE).

2019

EMES embarks in its second strategic planning process in search of a new, more stable, economic model, combined with research projects, membership fees, conference fees and other resources. The result is the **STRATEGIC PLAN 2019-2022**.



2018

The Bernheim Foundation financial support helped to increase the capacity of the Coordination Unit. This enabled hiring **Thomas Pongo** as project, membership and communication officer.

2021-2023

THE BERNHEIM FOUNDATION renews its support to EMES for three additional years.

EMES network

2022

Work begins to prepare the **NEW STRATEGIC PLAN** in a context radically different from anything we have lived before. The relevance of research to society and the role of researchers in the social and environmental transformations are of foremost importance in this new phase.

THE ERASMUS+ DIMSE PROJECT begins to test the feasibility of organizing an official joint Masters program on SE across European universities.

The **8TH EMES INTERNATIONAL TRAINING SCHOOL** takes place in June in Seville (Spain): it is the first face-to-face school since 2018.

BUILDING KNOWLEDGE TOGETHER

PHASE 6: Societal relevance of SE research





Events

Despite the Covid-19 pandemic, EMES managed to organize 8th EMES International Research Conference and to adapt with a hybrid format. After the hard times, our researching community needed to get together.

8th EMES International Research Conference



The 8th EMES International Research Conference on Social Enterprise, **“Social enterprise, cooperative and voluntary action: Bringing principles and values to renew action”**, was held in Teruel, Spanish Capital of the Social Economy, from 4 - 8 October, 2021.

Given the hybrid nature of this year's Conference and other online events, we all wished for the proximity and presence of our community. EMES conferences are all about meeting with great people and researchers, sharing ideas and knowledge, and transmitting the core values we genuinely believe in. So, a meeting such as this one in Teruel was great in the sense that after an extended lockdown, we could gather and share some unforgettable moments.

It was hosted by EMES with the support of the EMPOWER-SE COST Action, the University of Zaragoza's GESES Research Group, Social Economy Laboratory LAB_ES, CEPES Aragon, Caja Rural de Teruel and of course, the City of Teruel, the Aragon Government, the Federations of Cooperatives of Catalunya, and

the Ministry of Labour and Social Economy of Spain.

During four intense days, scholars explored the possibilities to strengthen, after the pandemic, the synergies of SE research with different agents. Specifically, critical debates revolved around another way of doing business that supports a full democratic life and a change in the productive and socioeconomic model.

The 8th EMES Conference confirmed the relevance of research to contribute to the consolidation of SE model in our societies and economic systems, as well as the urgency of transferring results from academia to public management so that governments and international institutions work in a coordinated manner.

We brought together...



52
Countries
represented

205
Online attendees



310
Participants

105
Face-to-face
attendees



156
Researchers



75
PhD students



Testimonials



Millán Díaz-Foncea

(GESES-University of Zaragoza, Spain) - Conference Co-Chair

"In 2019 we assumed the organization of this 8th EMES International Conference. We thought that the complexity would be in managing an academic event for 400 people, according to our estimates. We did not know that it would coincide with a global pandemic that would force us to simultaneously organize two conferences: one face-to-face and one online—both of them with the complexity and wanting to meet the expectations and needs of participants. Without doubt, it was a worthwhile challenge as it allowed us to meet in person after difficult months, to enjoy high-quality presentations and generate a positive impact in the territory and in the social economy sector."

and organized...



7
Roundtable
discussions



42
Parallel sessions



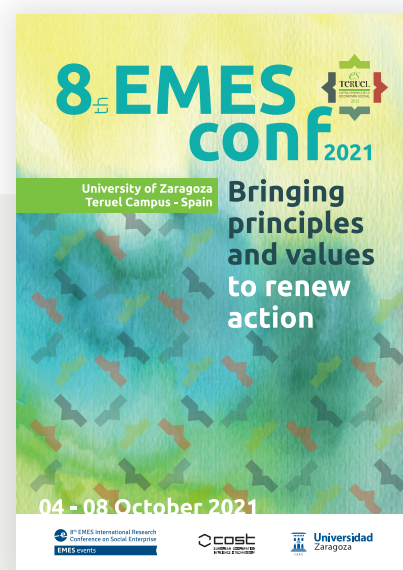
5
Plenary sessions



228
Communications
presented



15
Panel sessions



Tracey Coule

(Sheffield Hallam University, United Kingdom) - Conference Online Chair

"As many participants know, we faced significant technological challenges which all involved worked tremendously hard to resolve as quickly as possible. Nevertheless, I think my major learning was that the true magic of EMES rests centrally on in-person human interaction."

Media Coverage



Transitions towards an economy and research based on proximity



Lessons Learned

We share some recommendations based on the lessons learned from the 8th EMES International Research Conference during the dialogue between the EMES research community and different SE ecosystem agents.



Testimonials



Juliana Rodrigues

PhD (Aalto University, Finland/Brazil)- Online PhD participant

"The possibility of taking part in the EMES Conference in 2021 was very fruitful and a great opportunity to discuss prominent topics and issues on social enterprises in this scenario after long months of the pandemic. I genuinely appreciate the diversity of voices and exchange between researchers and scholars from the Global South and Global North. The hybrid format made it possible to take part in such powerful conversations even away from Teruel. Thank you for this opportunity!"

1

Stimulate the exchanges between different departments and units within **public administrations through working groups** and transversal projects. This cross-sectoral work could be facilitated by public administration itself or in collaboration with the SE and researchers active in this field.

2

Support the interaction of the agents, public administration and **autonomous communities** dedicated to promoting SE (increasing the multi-level perspective).

3

Promote, at local level, **the exchange** between SE experiences, general public and media representatives.

4

Support fundamental and applied research on real issues for the eco-social transitions we face, highlighting and substantiating the plurality of organizational models and citizen initiatives.

5

Support the **exchange of experiences and mobility of research** staff to generate synergies, both in future research projects and in possible applications in the public and business sectors.

6

Promote the encounter between existing networks that helps transfer knowledge between the academic, public and professional SE fields.



Michaela Giovannini

Independent researcher (Italy) –Face-to-face participant

“It was great for me to participate in the EMES conference in Teruel, especially this year, after lockdowns. It was like going back to real life, feeling that we belong to a research community which is, first of all, a place where you feel at home. A place where you meet people you know, and most of the time, the first question we ask each other is, “how do you feel?” This gives you a feeling of belonging, a sense of taking care of each other.”



Other events

ICSEM events

The last meeting of the ICSEM Project was a particularly nice moment, with a festive and moving atmosphere.

In 2021, technically speaking, the ICSEM Project was over. But the pandemic had hitherto and made it impossible to organise a last general meeting, bringing together all the partners to celebrate the conclusion of the Project and the publication of the last major output of the project—namely the two ICSEM-COST books, on respectively social enterprise in Western Europe and social enterprise in Central and Eastern Europe. The first two ICSEM book had been presented at the general meeting that had been organised in Sheffield (United Kingdom) during the 7th EMES International Research Conference on Social Enterprise; the full series of four books was in the limelight during the ICSEM special session that took place during the 8th EMES International Research Conference on Social Enterprise in Teruel (Spain) in 2021.

Though not as many ICSEM researchers were present on site as for previous ICSEM general meetings, due to sanitary restrictions still limiting the mobility of researchers from many countries, especially those outside the EU, this meeting—the first “real” meeting of ICSEM researchers since the series of lock-down periods worldwide linked to the COVID-19 pandemic and the last meeting of the ICSEM Project—was a particularly nice moment, with a festive and moving atmosphere.

Though the ICSEM Project is now officially over, many strong links have been created among the community of ICSEM researchers, and these synergies have undoubtedly not yet borne full fruit.



ZAZ- COST seminars | ZAZ 2021 Map and Compass

The EMES PhD Committee has organized the ZAZ 2021 Map and Compass series specifically aimed at the PhD and Early Career Researchers (ECR) community as part of the COST Action EMPOWER-SE. The goal was to empower the next generation of SE scholars.



EMES at UNTFSSSE technical symposium

EMES collaborates with international organisations and governments at all levels to advance the understanding of SE and support evidence-based policy-making in this field worldwide. In this context, EMES is an Observer Member of the United Nations Task Force for the Social and Solidarity Economy (UNTFSSSE).

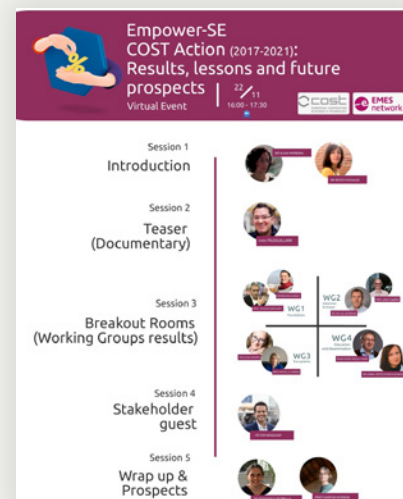
In 2021 EMES participated in the UNTFSSSE technical symposium, held virtually, from 6 to 10 December. The event provided an opportunity to discuss challenges ahead and strategies for the SSE future together with key actions to be jointly undertaken by its members and observers.

EMPOWER-SE Working Groups' meetings

5th Research Workshop "Changing social enterprises in changing territories: A multi-level perspective"

Co-organized by EMPOWER-SE COST Action, EMES International Research Network, Aix-Marseille University, LEST CNRS (France) and University of Zagreb (Croatia).

This workshop was conceived as a high-profile academic event aimed at exchanging initial thoughts in an incipient field of research covered by the EMPOWER-SE COST Action thematic line: multilevel analysis, territory and social enterprise (SE). One of the goals of the workshop was to contribute to EMPOWER-SE Working Group 3 on Eco-systems, regarding multilevel analysis, territory and SE. We managed to create connections that will lead to future joint research proposals.



Digital Closing Event of the EMPOWER-SE COST Action

After four years of joint activities and research, The 16206, COST Action entitled "Empowering the Next Generations of SE Scholars" (EMPOWER-SE), held an online event to gather, one last time, more than 400 participants that took part in the Action.

EMPOWER-SE consisted of four Working Groups (WGs). All four WGs succeeded in stimulating a lively exchange of perspectives among researchers and practitioners. They contributed to empowering the next generation of social enterprise scholars, particularly non-Western European social enterprise scholars.

The closing event was recorded and is available on the **EMES YouTube channel**.



Research Initiatives

These past years saw the consolidation of the EMPOWER-SE COST Action with over 10 activities and 400 participants. In 2021 we successfully closed this COST Action.



EMPOWER-SE COST Action

COST is a European financial instrument supporting trans-national cooperation among researchers and scholars across Europe, and which contributes to building up the European Research Area. EMES was in charge of implementing the EMPOWER-SE COST Action (CA16206). The main contribution of this COST Action can be summarized in the valuable support—both scholarly and technical—provided to SE scholars. The support of COST has sustained and grown one of the largest communities of PhD and Early Career researchers (ECR) in the field, represented in the governance of the global network that supports their activities. This size of this community has produced and will continue to create a more international, better supported and educated cohort of researchers who can advance the SE field.

In order to articulate the various aims of EMPOWER-SE, four different Working Groups were created, namely, Foundations, Industries, Ecosystems, and Dissemination and Education. The Action worked in Grant Periods in order to organize its work and activities. Due to COVID-19 mobility restrictions, EMES had to learn how to organise the network virtually during 2021, while offering engaging virtual meetings. In this challenging period the COST Action managed by EMES ended successfully in October 2021.

**Full name:**

Empowering the next generation of social enterprise scholars
Scientific Coordinators: Sílvia Ferreira, Action Chair (PT)

Participating researchers:

+300 researchers from 48 different countries

Date:

November 2017 - October 2021

Web:

www.empowerse.eu

RESULTS & OUTPUTS

EMPOWER-SE ACTION

The EMPOWER-SE COST Action generated many outputs, of different types, in the period 2019-2021. The main networking mechanisms organized by EMPOWER-SE were:

1. Working groups (WG)
2. Conferences, meetings, seminars and talks
3. Training schools
4. Short-term scientific missions

Documentary

One of the COST Action results was documentary which serves to recognize the debate generated regarding social enterprises and the wider SE field with particular emphasis on early-stage researchers and scholars in countries with emerging or non-existing research ecosystems.

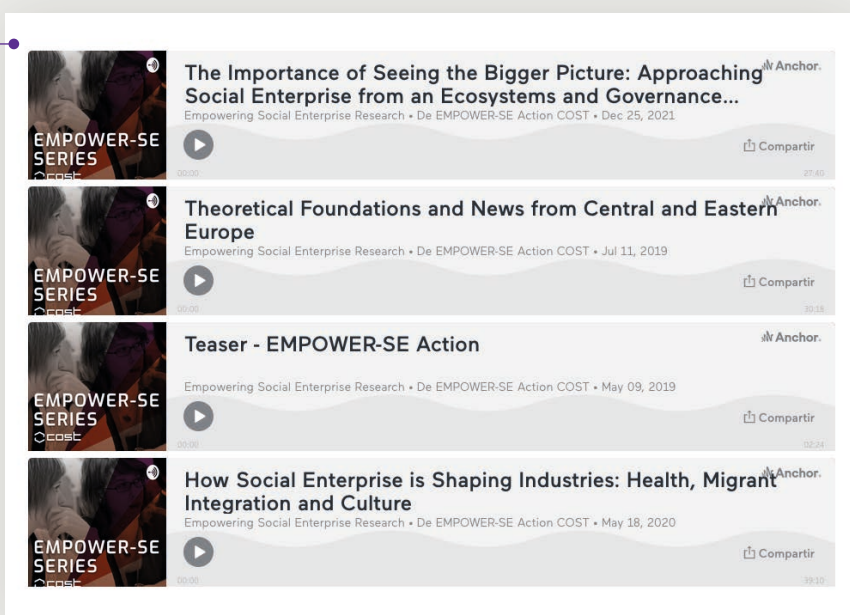
[\[Watch the Documentary\]](#)





Podcasts

Podcasts have proven to be a unique tool for expanding knowledge about specific topics. Within the EMPOWER-SE Action, we were producing the EMPOWER-SE podcast series that offer a unique insight into the work that this large community of international researchers is achieving together (over 300 researchers have participated in the Action).



Stakeholder Briefs

Selected Conference Papers

Books, Journal issues and articles

Workshop proceedings



ICSEM



The ICSEM Project was carried out from 2013 to 2020. This unique worldwide research project aimed to identify, analyse and compare social enterprise models across countries, regions and fields. Over 230 researchers, working together under the coordination of two leading scholars in the field of social enterprise—Jacques Defourny (CES, HEC - University of Liege, Belgium) and Marthe Nyssens (CIRTES, Catholic University of Louvain, Belgium), both long-standing EMES members—took part in the project. In 2019, synergies with the EMPOWER-SE COST Action led to a cooperation between the two projects and allowed the inclusion of new countries in the ICSEM Project. In total, some 60 countries, in all regions of the world, were covered, and a database was built through the collection of detailed information on some 720 social enterprises from over 40 countries.

Full name:

International Comparative Social Enterprise Models Project

Scientific Coordinators:

Jacques Defourny (ULg-Belgium)
and Marthe Nyssens (UCL-Belgium),
EMES Belgian institutional members

Participating researchers:

250 from 50 different countries

Date:

Phase 1:

July 2013 - April 2017 (as part of the
IAP-SOCENT Programme)

Phase 2:

December 2017 - October 2021
(as part of the EMPOWER-SE Action)

Web:

emes.net/icsem-project



RESULTS & OUTPUTS

ICSEM PROJECT

One of the outputs of this large research project were, as mentioned in last year's report, the **Working Papers** produced by the participating national teams of researchers. Some 50 Working Papers were published over the course of the Project.

Another major achievement of the Project was the unique **database** that was built on 720 social enterprises worldwide, and which has allowed to enrich and provide empirical basis for the various transversal analyses carried out.

But a really central outputs undoubtedly the series of **four books**, published by Routledge, about respectively social enterprise in Latin America, social enterprise in Asia, social enterprise in Central and Eastern Europe and social enterprise in Western Europe.

In the last two decades, the quest for a widely accepted definition of social enterprise has been a central issue in a great number of publications.

The main objective of the ICSEM Project, on which these books are based, was to show that the social enterprise field would benefit much more from linking conceptualisation efforts to the huge diversity of social enterprises than from an additional and ambitious attempt at providing an encompassing definition. Starting from a hypothesis that could be termed "the impossibility of a unified definition", the ICSEM research strategy relied on bottom-up approaches to capture the social enterprise phenomenon in its local and national contexts. This strategy made it possible to take into account and give legitimacy to locally embedded approaches, while simultaneously allowing for the identification of major social enterprise models to delineate the field on common grounds at the international level.

The four volumes in this series about social enterprise worldwide will serve as key references and resources for teachers, researchers, students, experts, policy makers, journalists and others who want to acquire a broad understanding of the social enterprise and social entrepreneurship phenomena as they emerge and develop in this region.

Beyond the ICSEM Project, the ICSEM community of researchers

During the ICSEM Project, many meetings were organised:

- **"General meetings"**, bringing together all researchers, took place in Belgium (2013), Finland (2015), Sweden (2016), Belgium (2017) and the UK (2019);
- **"Regional symposiums"** were organised in South Korea and Belgium (2014), Chile (2015), Albania (2016), France and Brazil (2016) and Portugal (2018); and
- **"Local talks"** brought together local researchers and stakeholders in South Korea and Poland (2014), Switzerland, Israel and Germany (2015), France (2016) and Cambodia (2017).

"One day, one team, one chapter..."

In 2021, a new series of posts was launched on the EMES blog. The idea behind this series, titled "One day, one team, one chapter...", is to make the four ICSEM-COST books better known through short articles, each devoted to one chapter of one of the four books, and to introduce the so many incredible people who took part in the crazy "ICSEM adventure"!



ONE DAY, ONE TEAM, ONE CHAPTER...

Social Enterprise in Lithuania: Historical Roots and Current Trends

2022.03.18

The idea behind the «One day, one team, one chapter...» series is to present the four books published in the framework of the ICSEM Project and the European SE Action, Social Enterprise in Asia, Social Enterprise in Latin America, Social Enterprise in Western Europe and Social Enterprise in Central and Eastern Europe, and to introduce the so many incredible people who took part in the crazy "ICSEM adventure"!

LITHUANIA

SE development in Lithuania: a still diverse and multifaceted discourse

The discourse on social enterprises in Lithuania is still diverse and multifaceted, although it emerged at the beginning of the new millennium, together with processes of legal institutionalisation of this type of enterprise. This chapter sheds light on the historical roots of social enterprise development in Lithuania, exploring challenges related to the use of the concept and contextual factors that have been shaping such development. The chapter also discusses models of social enterprise and how they can be linked to the EMES indicators. The chapter concludes with a short overview of the past, present and future trends in social enterprise development in Lithuania.

The country team: Audronė, Eglė, Agota and Philip (Lithuania)

EMES member Audronė Urmanavičienė holds a PhD in Management science. She is a social entrepreneurship lecturer at the School of Governance, Law and Society, Tallinn University (Estonia). Her PhD thesis (2015) was on social impact assessment of work integration social enterprises in the Baltic states. Her research interests include social enterprise, social impact and social impact assessment.



Publications

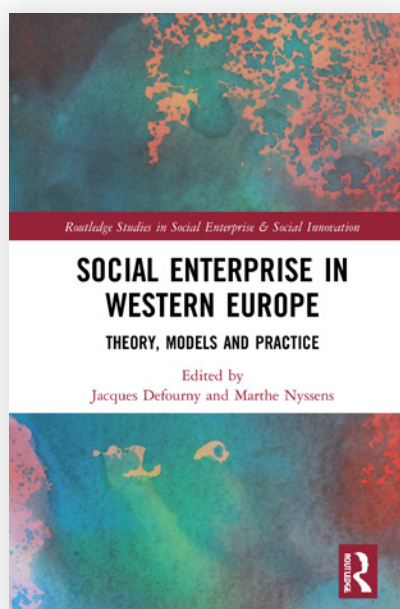
The various publications linked to EMES research projects —namely the EMPOWER-SE COST Action and ICSEM Project— are presented.

SOCIAL ENTERPRISE
Edited by Luiz J. L.

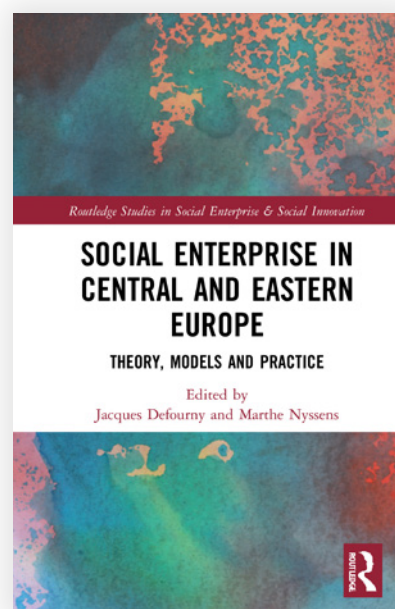
Books

The two books about Europe—resulting from a cooperation between the ICSEM Project and the EMPOWER-SE COST Action—were published by Routledge in 2021 in the “Routledge Studies in Social Enterprise & Social Innovation” series. This series’ editors are EMES members Jacques Defourny (Belgium), Lars Hulgård (Denmark) and Rocío Nogales (EMES Coordination Unit).

These two books came with an excellent piece of news: indeed, thanks to the support provided by EMPOWER-SE (COST Action 16206 “Empowering the next generation of social enterprise scholars”), the two European books were made available in Open Access:



Defourny, J. & Nyssens, M. (2021). **Social Enterprise in Western Europe. Theory, Models and Practice**. London and New York: Routledge.



Defourny, J. & Nyssens, M. (2021). **Social Enterprise in Central and Eastern Europe. Theory, Models and Practice**. London and New York: Routledge.



Papers

8th EMES Selected Conference Papers

A total of six papers have been published as part of the 8th EMES Conference Selected Papers. Conference papers were selected based on the evaluation of the session chairs and published on the EMES website. For more information about the papers, we encourage you to contact the author(s) directly.

These are the six selected conference papers all of which can be **downloaded in PDF format**:



■ Irene Ciccarino, Susana Rodrigues and Jorge Da Silva (2021), "Social Value Appraisal: Cutting the Gordian Knot", Centre of Applied Research in Management and Economics (CARME, Portugal).

■ Thibault Mirabel (2021), "Survival Advantage of Worker Buyouts over Newly Created Worker-Owned Firms", University of Paris-Nanterre (France).

■ Maarten Hogenstijn, Hendrik-Jan Trooster, Bas Jacobs and Claudia Cuypers (2021), "Building a transdisciplinary learning community around a SE minor program", Amsterdam University of Applied Sciences (The Netherlands).

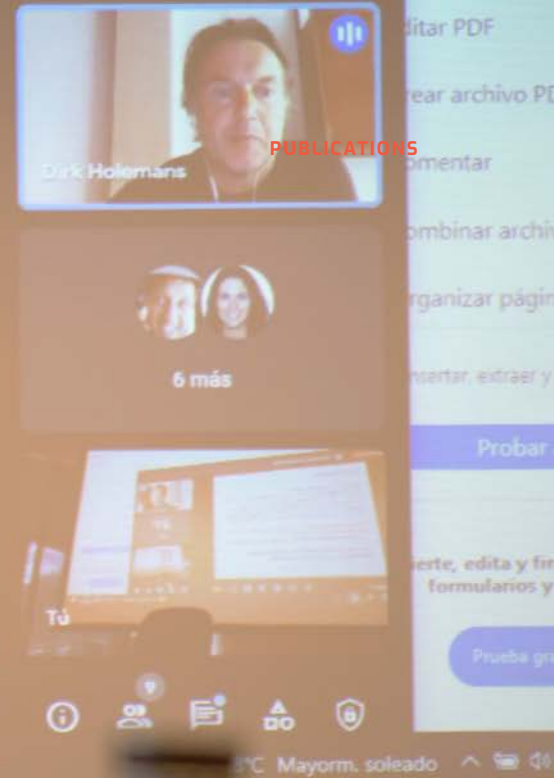
1. Introduction

The basic concepts of Polanyi ...

Double movement "...the action of two organizing principles in society", with the one being "the principle of economic liberalism, aiming at the establishment of a self-regulating market", while the other is "the principle of social protection aiming at the conservation of man and nature (Polanyi 1944)

Fictitious commodification of land (nature), labor and nature
Disembedding of the economy
-> countermovements that install forms of social protection

Three ways of social integration: market exchange, redistribution, reciprocity (+ households)



- Heidi Myrskyläinen, Vineta Fortina, Mana Farshid and Jutta Jaani (2021), "Discourses of participatory governance. Case study from social enterprises in Nordic-Baltic countries".



- Kristel Maasen (2021), "Organising the enterprise as a common: an alternative to participatory management in worker cooperatives", Faculty of Philosophy and Social Sciences Research Centre (METICES, Belgium).



- Sofia Adam and Ifigenia Douvitsa (2021), "Theoretical foundations of social enterprise, cooperative and voluntary action principles and values: Complementarities, contradictions and their implications", Hellenic Open University (Greece).



Ibero-American Journal of Solidarity Economy and Socio-Ecological Innovation, RIESISE

Special issue, Volume 3.

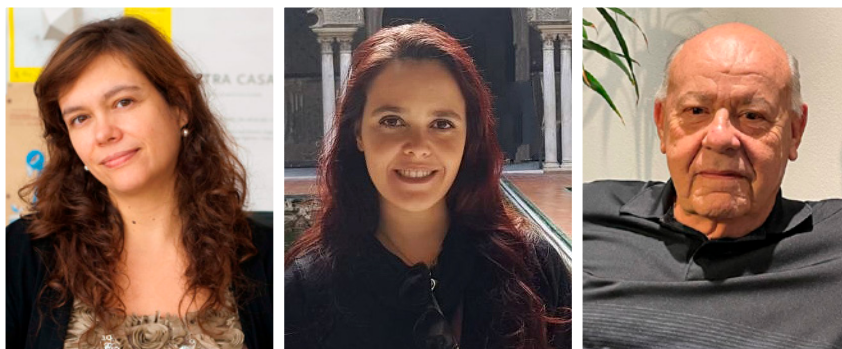
This special issue of the Ibero-American Journal of Solidarity Economy and Socioecologic Innovation (Revista Iberoamericana de Economía Solidaria e Innovación Socioecológica, RIESISE) coordinated by Carmen Guzmán Alfonso and Rocío Nogales Muriel presents a selection of the papers presented in the REJIES-COST International PhD Seminar held on April 4-5 at the University of Seville (Spain). It was co-organized by CIRIEC's Network of Young Researchers in Social Economy (REJIES) and the EMPOWER-SE COST Action.

Best Conference Paper Award & Best PhD Paper

For the fourth edition of this Award, the winners of the "Best Conference Paper" were Irene Ciccarino (CARME-IPLeiria), Susana Rodrigues (CARME-IPLeiria), Jorge Ferreira (IAG-PUC, Rio de Janeiro/Brazil with the paper titled: "Social value appraisal: cutting the Gordian knot."

Given the commitment of EMES to emerging scholars, this Award specifically distinguishes a PhD category but it also aims to emphasise the work of researchers who are in the initial phases of their careers. The winner of this year's "Best PhD Paper Award" is Mirabel Thibault with his paper: "Survival Advantage of Worker Buyouts over Newly Created Worker-Owned Firms".

The co-authors of the Best Paper Award 2021, Irene Ciccarino, Susana Rodrigues and Jorge Da Silva"♥



♥ The author of the Best PhD Paper 2021, Thbault Mirabel, receives the Award certificate from EMES president, Taco Brandsen.

EMPOWER-SE Stakeholder Briefs and Proceedings

Stakeholder Briefs were published during 2021 within the framework of the EMPOWER-SE COST Action:



- **Stakeholder Brief #11.** Summarises the main outcomes of the four Working Groups (WGs) - Theoretical Foundations of SE (WG1), SE Industries and Impact (WG2), SE Ecosystems (WG3), Training and Dissemination (WG4) - from the perspective of the stakeholders involved.



- **Stakeholder Brief #10.** Summarises the discussions that took place during the fifth meeting of Working Group 2 “Exploring new industries”, held in Zagreb in June 2021 as part of the COST Action “Empowering the next generation of social enterprise scholars” (EMPOWER-SE).



- **Stakeholder Brief #9.** Summarises the debates that emerged in the Research Workshop “Sport as a community builder: Social entrepreneurship and social enterprises in sports” of Working Group 2 (“Social enterprise in industries”) of the COST Action “Empowering the next generation of social enterprise scholars” (EMPOWER-SE)



- **Stakeholder Brief #7 and #8.** Summarises the results of the ICSEM project for Western Europe and Central and Eastern Europe.



Training & Education

More than 300 PhD candidates and Early Career Researchers from over 40 countries have already participated in the EMES Training Schools.

Second phase of the blended EMES Training School at the 8th EMES International Research Conference

During the lockdown of spring 2020, the Board of Directors and Coordination Unit of EMES have been working on designing a learning experience that matches the quality of previous schools. The Training School 2020-2021 was a blended learning experience. The first phase took place online on the 23rd and the 24th of October 2020. The second phase took place face-to-face in Teruel (Spain) on the 7th of October 2021.

The half-day physical gathering goal was to complete the individual and online collective work done as part of this school. Such a goal was achieved through a combination of a plenary panel plus a practical workshop and a summary of the lessons learned in the previous phases and the progress made since the online gathering in October 2020.

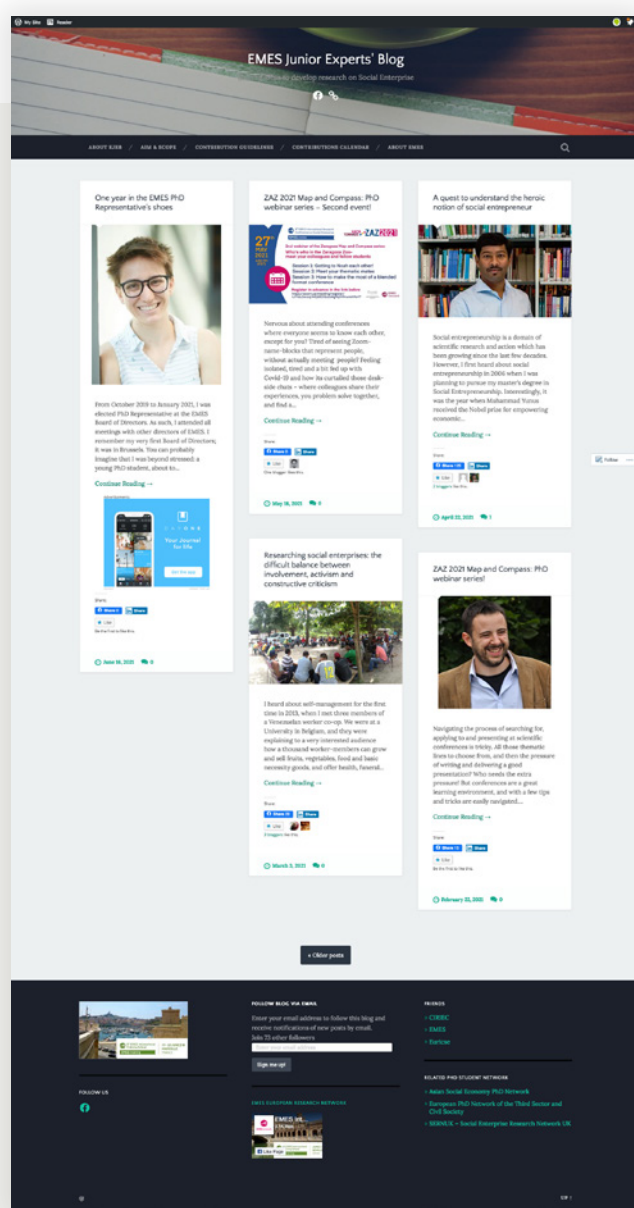


Nazli Massihi

PhD student from KU Leuven (Belgium)

"PhD students and professors at the EMES Training school were the first people I virtually met, other than my supervisors and a neighbour, but they were so friendly and supportive that it felt like I was not anymore new here... The follow-up sessions, getting together for different PhD empowerment workshops and preparatory sessions for the EMES Conference, helped me get to know more and more people in the same field as me. Gathering at the EMES Conference was wonderful as we could finally meet many people in person, people who had turned into friends after a year-time. It completed the whole experience."

EMES PhD network & Alumni network



EMES Junior Experts Blog /EJEB

The year 2021 resumed with activity and gathered new views, which speaks of the interest in this kind of publications.

There were five entries published in 2021:

- One year in the EMES PhD Representative's shoes, by Coline Serres
- Announcing ZAZ2021 PhD Webinar events
- A quest to understand the heroic notion of social entrepreneur by Raju Ranjan Kumar Paswan
- Researching social enterprises: the difficult balance between involvement, activism and constructive criticism, by Aurélie Soetens
- A PhD journey through Social Farming, by Eliška Hudcová

EMES PhD network supports the activity of EJEB and encourage PhD students to publish texts about their dissertation in connection with current issues in society.

<https://emesphdnetwork.wordpress.com/>

The EMES PhD Network representatives

Who are we?

The "PhD Reps" are a group of PhD students affiliated to the EMES Network that voluntarily work in a collective—almost unstructured—fashion to carry out different projects aimed to assist other PhD students of the Network. PhD Representative group aim is to provide access to relevant information and PhD advice.

How do we work together?

The whole team "adopts" different functions to carry out specific tasks depending on the demands of the project. Within each project some members participate more in the building up process, and some others more in the delivery of it. Most of them contribute along various stages. Ultimately, each member contribution depends on their personal availability, which is mostly determined by PhD and work-related responsibilities. This method of collaborative working as resulted very effective overall as a proactive and can-do attitude is very present in all members.

EMES PhD Community Leadership



KERRY KRIGE
PhD representative

Kerry is enrolled in a joint PhD at KU Leuven (Belgium) and the University of Pretoria (South Africa). She is studying the characteristics and conditions for social entrepreneurship in an emerging market context. She is also involved in the African Network of Social Entrepreneurship Scholars (ANSES), which was formed to strengthen African scholarship and teaching in social enterprise. She is an Associate Editor of Emerald Emerging Markets Case Collection.



MARINA NOVIKOVA
PhD Community Leader

Marina is PhD student at ISCTE - University Institute of Lisbon. Her research looks at the role and the impact of social innovation in rural regions, with the research carried under the ESR position in Horizon 2020 RurAction project. Within the PhD Reps team Marina takes on a role of blog post writer and contributes to the organisation of the ZAZ webinars.



KAI GREEN
PhD Community Leader

Kai is completing his PhD at Roskilde University in Denmark. He has a background as an actor and theatre dramaturg in the UK, but came to Denmark in 2016 to start a MSc in social entrepreneurship. His research interests are feminist economics, social enterprise and the cultural industries. Kai worked in text-based theatre and dance with artists in the UK, Denmark and Canada.

OTHER MEMBERS OF THE TEAM INCLUDE

SERGIO PÁRAMO-ORTIZ ESMERALDA GARRITSE, HILDE SVRLJUGA, NADEEN PURNA AND TAMÁS VERES.



EMES Membership

There are two categories of members in EMES, institutional and individual, and each of them brings to the table different set of capacities in order to ensure the sustainability of the network.

Individual members in figures



184

Individual
Researchers



120

Graduate
Students



304

Total members

A new institutional member joins EMES: Join us in welcoming Institutions for Collective Action (ICA)

ICA's highly interdisciplinary research team includes management scientists, historians, anthropologists, sociologists, and representatives from other complementary disciplines; together, they build theories about sustainable institutions for collective action. They study a myriad of topics, from the evolution of commons over the past millennium to the formation of platform co-operatives and modern initiatives of citizens involved in short-chain food supply. Team members aim to involve citizen collectives in their research ("citizen science") and to return what they learn to society through a knowledge platform encouraging and facilitating the interchange of expertise among collectives of various backgrounds.



**ICA-RSM BECOME
THE NETWORK'S
15TH INSTITUTIONAL
MEMBER. DISCOVER
ITS WEBPAGE ON
THE EMES WEBSITE!**

Institutional members 2021 list



■ AICCON

Research Centre on Cooperation and Non Profit Organizations. Univ. of Bologna, Forlì Campus (IT)
<https://www.aiccon.it/en/>



■ CES-PT

Centre for Social Studies. University of Coimbra (PT)
<https://www.ces.uc.pt/en>



■ CES-BE

Center for Social Economy. Univ. of Liege (BE)
<http://www.ces.uliege.be/>



■ CIRTES

Centre Interdisciplinaire de Recherche Travail, État et Société. Catholic Univ. of Louvain (BE)
<https://uclouvain.be/en/research/cirtes>



■ GESES

Group of Social and Economic Studies of the Third Sector. Zaragoza University (SP)
<http://geses.unizar.es/en/home/>



■ ICA

Institutions for Collective Action
<https://www.collective-action.info/>



■ SESAM

Norwegian centre for social entrepreneurship and social innovation (NOR)
<https://www.usn.no/research/our-research/health-and-welfare/centre-for-social-entrepreneurship-and-social-innovation/>



■ SHU

Sheffield Hallam University
Sheffield (UK)
<https://www.shu.ac.uk/centre-regional-economic-social-research/>



■ CCS

Centre for Co-operative Studies. Univ. College Cork (IE)
<https://www.ucc.ie/en/ccs/>



■ CSE

Centre for Social Entrepreneurship. Roskilde University (DK)
<https://typo3.ruc.dk/en/research/search-research-centers/cse/>



■ CNAM

Chair of Social and Solidarity Economy, (FR)
<https://www.cnam.eu/site-en/>



■ EURICSE

European Research Institute on Cooperative and Social Enterprises. Univ. of Trento (IT)
<https://euricse.eu/>



■ KASES

Korean Association for Social Economy Studies (SK)
<https://emes.net/institutional-members/korean-association-social-economy-studies-kases/>



■ LEST

Laboratoire d'Economie et de Sociologie du Travail, LEST.
 Univ. of Aix-Marseille (FR)
<https://lest.fr/fr?lang=en>



■ Södertörn University

Stockholm (SE)
<https://www.sh.se/english/sodertorn-university>

EMES Functioning and Governance

With an open membership and members from all over the world, EMES is committed to ensuring an institutional sustainability that allows it to achieve its mission in serving the community of SE researchers.



Governing Body

Board of directors

- **Linda Lundgaard Andersen**, CSE (Denmark)
- **Taco Brandsen**, Radboud University (The Netherlands)
- **Tracey Coule**, SHU (United Kingdom)
- **Philippe Eynaud**, CNAM (France)
- **Silvia Ferreira**, CES (Portugal)
- **Luiz Inácio Gaiger**, UNISINOS (Brazil)
- **Giulia Galera**, EURICSE (Italy)
- **Nicole Göler von Ravensburg**, Frankfurt University of Applied Sciences (Germany)
- **Marthe Nyssens**, CIRTES (Belgium)
- **Mary O'Shaughnessy**, CBS (Ireland)
- **Francesca Petrella**, LEST (France)
- **Simone Poledrini** University of Genoa (Italy)
- **Kerryn Krige** (Belgium/South Africa) – PhD representative



EMES 2021 General Assembly

The 2021 annual General Assembly was held at 8th EMES International Research Conference, and it gathered EMES members in Teruel. This extraordinary assembly was a unique moment for EMES members to meet face-to-face after the COVID-19 pandemic. The objective was to learn about activities and plans from the Board of Directors and the Coordination Unit and dialogue with the EMES community.



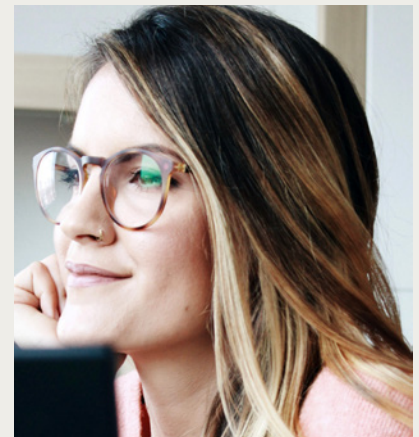
Taco Brandsen became the new president of the EMES Board of Directors

During the 2021 annual General Assembly, it was announced that Taco Brandsen would take over the presidency of the EMES International Research Network. Taco has been a member of the EMES Board of Directors since 2013. The Board will remain same for the next two years, and Marthe Nyssens will remain as a board member.



A newly elected PhD representative, Kerryn Krige

In November 2021, a newly elected PhD representative—Kerryn Krige—joined the EMES Board, taking over from the former PhD representative, Sergio Páramo-Ortiz.



Coordination Unit

2021 was an exceptional year for EMES International Research Network. Internally, we have a new member: Tamara Bilbija has joined the Coordination Unit to support with project, administration and communication tasks.

Financial overview

2021 Income



2021 Expenses





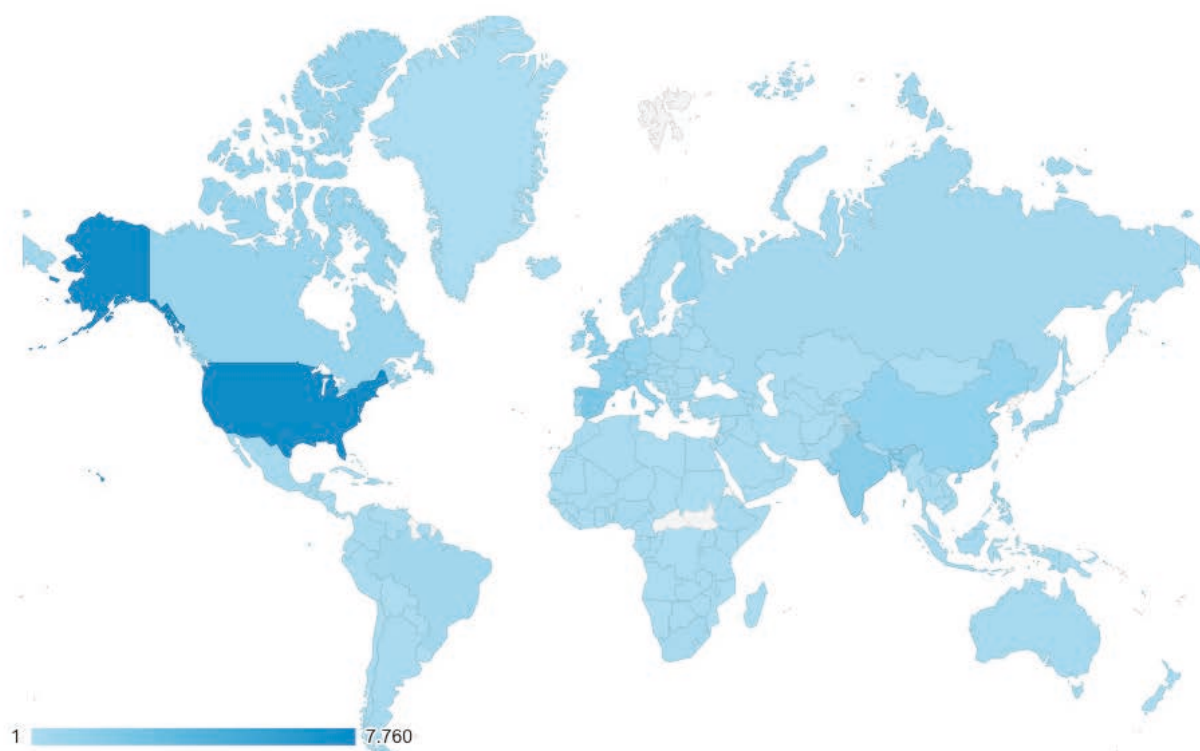


Communication & Engagement

EMES relies on the power of a direct and honest communication to enhance the participation of its members and exchange with other communities.

EMES website data 2021

EMES website data 2021, the website attracted **34.504 new visitors** from **194 countries**.



Visits by County

MAIN 9 COUNTRIES	
United States	7,760
Spain	2,250
India	1,600
United Kingdom	1,359
France	1,342
Italy	1,204
China	1,122
Netherlands	1,113
Belgium	1,008

Global data



Visitors



Social networks



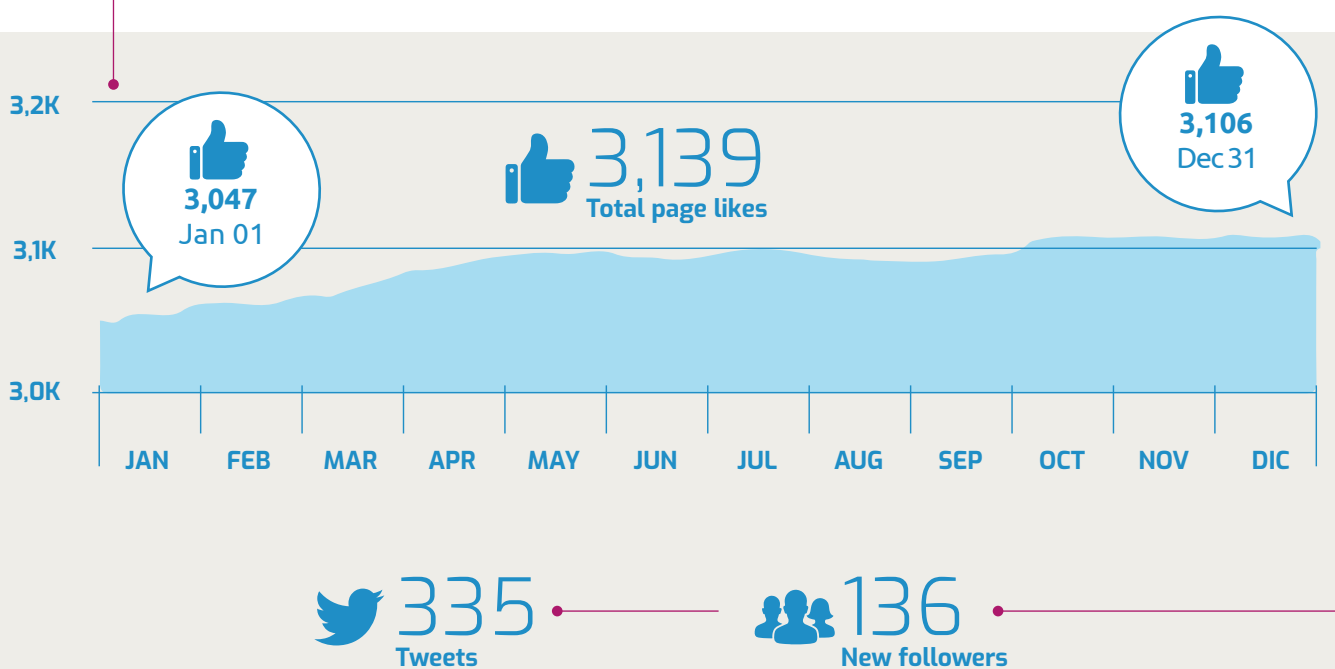
Facebook

The number of followers and engagement on **Facebook** continues to increase.



Twitter

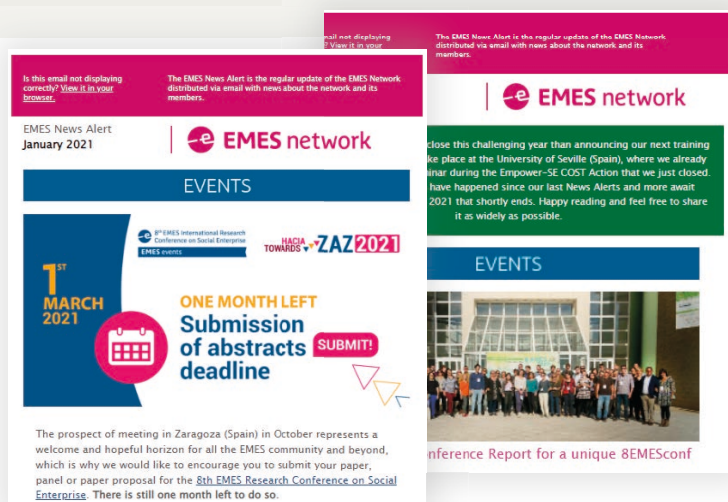
You can connect with us through a Twitter. Follow **@emesnetwork** to ask us questions and stay up to date.



News alerts

A total of 5 News Alerts were published in 2021.

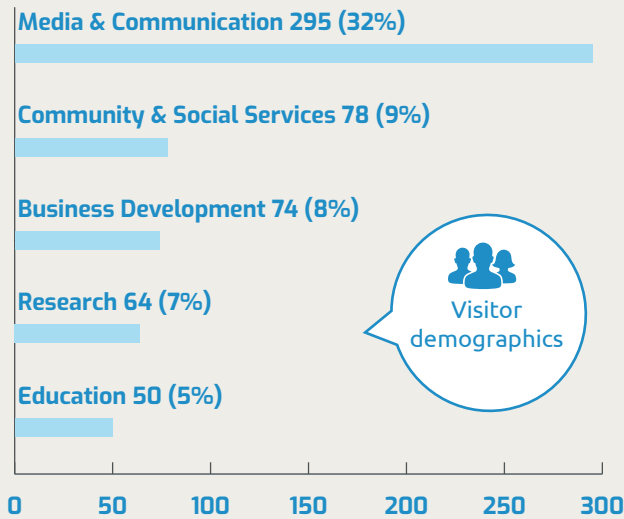
Subscribe to our list





LinkedIn

Reaching out on **LinkedIn** and engage with us. Access knowledge, insights and opportunities.



YouTube

All the video material produced in 2021 is available on the EMES YouTube channel.

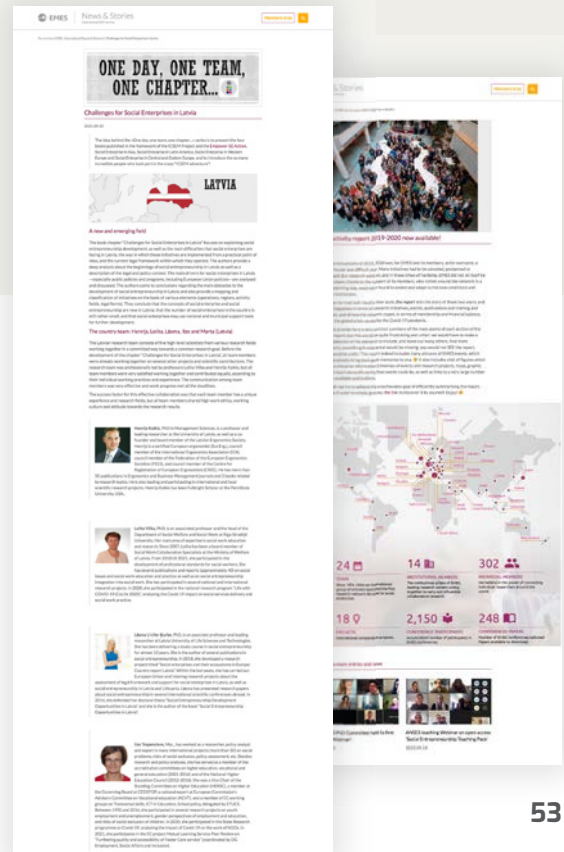
7,687
Views

14
Videos produced

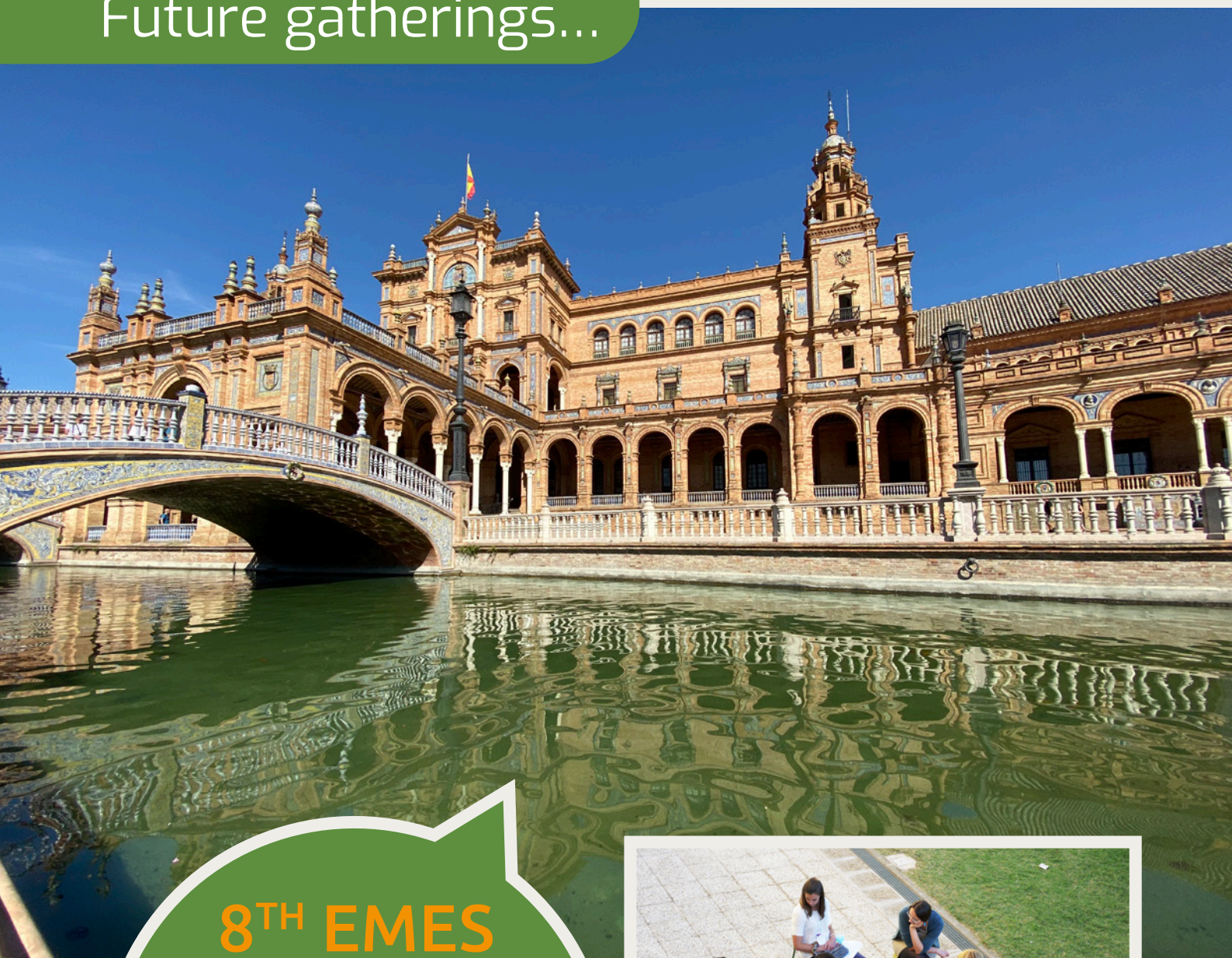
News&Stories



44
posts published
in the "EMES Blog"



Future gatherings...



**8TH EMES
TRAINING SCHOOL
WILL TAKE PLACE
IN SEVILLE, SPAIN.
JUNE 20 - 23,
2022.**



**8th EMES International
Training School**

EMES training



**NEXT YEAR, EMES CELEBRATES
ITS 20TH ANNIVERSARY!**
THAT'S TWO DECADES DEVOTED TO BUILDING
A BODY OF KNOWLEDGE AND A COMMUNITY
AROUND THE SE FIELD. WE'RE PLANNING A
PROGRAM TO EXCHANGE, REMEMBER AND LOOK
FORWARD TO THE NEXT TWENTY YEARS TOGETHER.
STAY TUNED!



EMES network

EMES International Research Network asbl

emes.net